

# QUIKTRAC<sup>®</sup> EXEVIEW

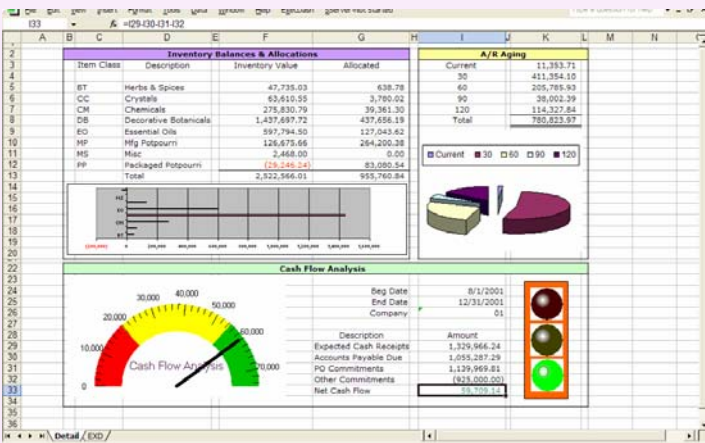
Business managers need key business data, data that must be real-time and accurate. QuikTrac<sup>®</sup> ExeView for Microsoft<sup>®</sup> Excel allows users to build dashboard-type views of this critical business data. QuikTrac<sup>®</sup> ExeView works as a powerful Microsoft add-in to seamlessly retrieve any data on the network and return that real-time data, whether summary or detail, into your spreadsheet.

Leverage all your knowledge of Excel with the full confidence that your company data can be dynamically updated within your spreadsheet. ExeView allows you to continue to work with the Excel product you use consistently but now with vastly improved capabilities to reach the data contained in your network.

## Benefits include:

- Connectability from Excel to multiple data sources including web services
- Easy-To-Use Query Builder
- Import/Export pre-configured queries
- Use provided Excel wizard to create formulas
- Perform calculations and drill-down to detail
- Copy/Paste drill-down data back into your spreadsheet
- Use data from your spreadsheet as parameters for query
- Dynamically customize the view of your drill-down data
- Auto-Posting of query detail

*REVOLUTIONIZING  
Spreadsheet Automation<sup>™</sup>*



# CRITICAL BUSINESS DATA IN MICROSOFT® EXCEL

## Problems associated with standard business intelligence tools include:

- Expensive configurations of data warehouses
- Difficulty in configuring efficient drill-down process
- No interactive use of the data (read-only)
- Requires initial configuration of data cubes
- Length of time required to create or update reports. This often requires a super-user or consultant
- Data integrity issues due to no dynamic access to data

To overcome these issues, users resort to running reports and queries and then re-type the data into Excel spreadsheets. These spreadsheets are then used as the basis for other reports and charts. As a consequence of this lengthy, manual process, the data becomes stale and inaccurate. In many cases, this time-consuming process has to be repeated multiple times in the course of a reporting period, and still results in data with questionable integrity.

Eliminate this bottleneck with QuikTrac® ExeView for Excel and give your users, whether it is your CEO or your staff accountant, a tool that leverages the power and flexibility of the Excel spreadsheet.

## Configured Query Examples include:

- Sales Forecasting
- Cash Flow Analysis
- Inventory Valuation
- Customer Backlog Reports
- Customer Open Order Reports
- A/ R Aging
- Sales by Item Class
- Internal Audit Review by Account
- Material Issues
- Production Receipts
- Labor History Reporting
- CRM Reporting
- Transaction History
- PO Commitments

Customer / Customer Name	Invoice Number	Original Amount	Remaining Amount
8855 NEW SUN INC	72344	-150.70	-150.70
1477 AMERICAN DRIED COMPANY, INC	2521	34.82	34.82
2154 MID-CENTRAL PRODUCTS (M.C.P.)	2522	18.27	18.27
2849 COUNTRY HERBALS BY ANDREA # ##	2527	74.20	74.20
3594 A-TREY INDUSTRIES	2533	20.80	20.80
7078 NATURA ESSENTIALS # ##	2534	191.59	191.59
7186 LIGHTED FOREST CANDLE CO., LLC	2535	6.76	6.76
7838 BOTANICAL HABITATS	2536	35.51	35.51
8459 OREGON TRAIL SOAPS, SOAPERS	2538	41.21	41.21
8842 GASSHO BODY & MIND INC	2542	1.88	1.88
11446 ACCURATE INDUSTRIES INC	2547	20.98	20.98
11485 SAPOJE INTERNATIONAL INC # ##	2549	19.50	19.50
11868 COMFORTS OF HOME # #	2550	14.00	14.00
12228 COSMETIC ESSENCE, INC	25		112
12344 SOFT GEL TECHNOLOGIES, INC	25		94
13561 CAST A MAGIC SPELL # ##	25		36
13640 JONES CHERYL	25		50
7871 ALPHA THERAPY	730		142
11868 COMFORTS OF HOME # #	25		39
13444 KATELYN'S KORNER	730		57

*View your enterprise data in a Real-Time dashboard environment*

Integrated Barcoding Systems

1801 West US 223

Suite 115

Adrian, MI 49221

Contact: Andy Jacobs

Phone: 1.517.266.7771

Fax: 1.517.266.7772

Web: [www.intbarcode.com](http://www.intbarcode.com)